

# Microsoft Copilot AI Agent for AEC Industry



Next pour adjusted



Rain incoming  
rescheduled

Pour rescheduled.  
Site not ready

## Smart Concrete Scheduling AI Agent

It brings real-time intelligence to construction logistics. It automatically re-routes deliveries based on live traffic and weather, aligns dispatch with site readiness, and sends instant updates via WhatsApp or email. By minimizing waste and unplanned stoppages, it ensures smoother, more efficient pours. Seamlessly integrated with Microsoft Dynamics 365 and Power Platform, it empowers teams with proactive scheduling. This is not just automation—it's adaptive intelligence that keeps your projects on track.

# Smart Concrete Scheduling AI Agent

AI-Powered Precision for On-Time,  
Cost-Effective Projects

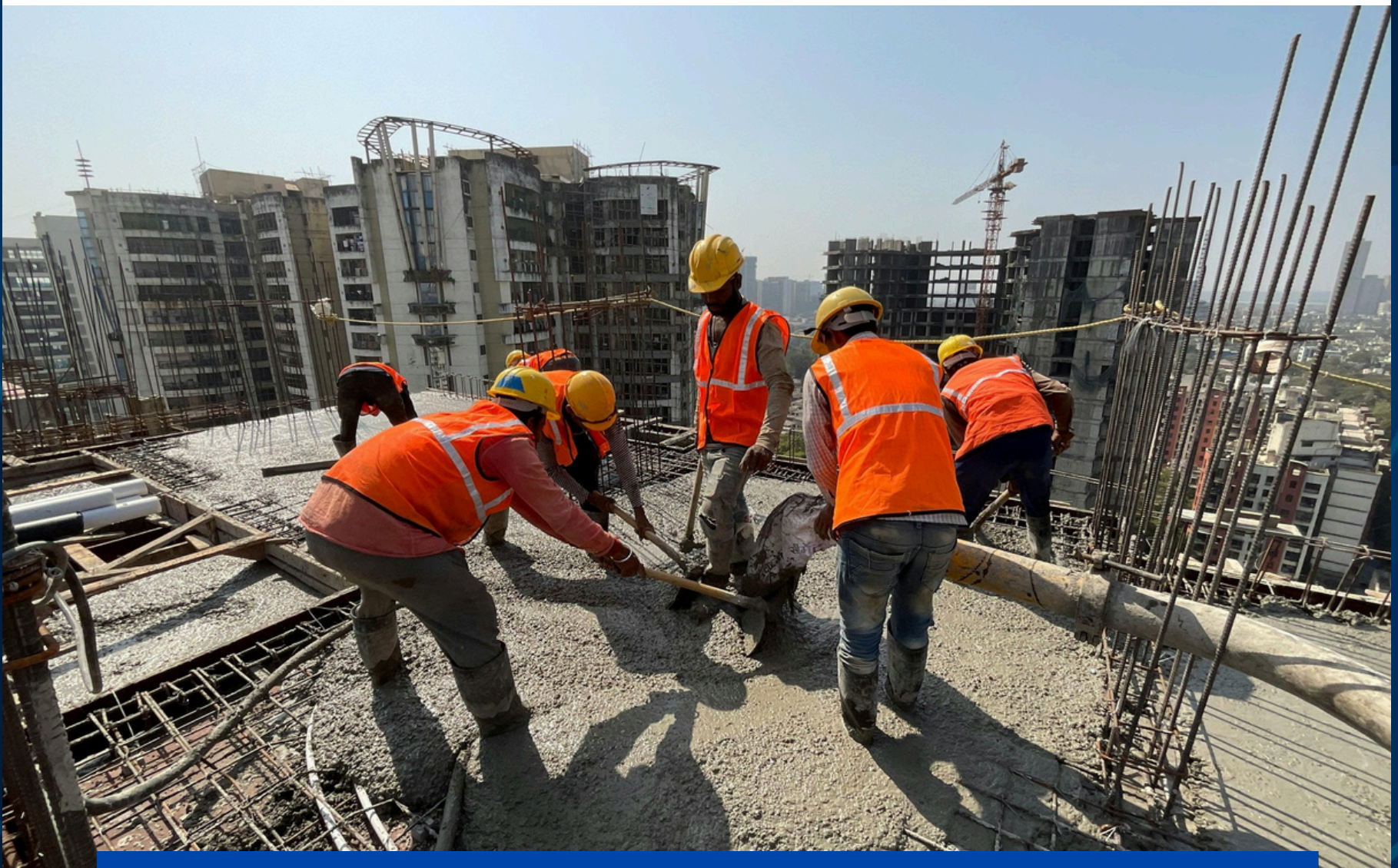


## ❌ Problem

- Delays & mismatched schedules
- Weather & logistics disruptions
- Idle labour & equipment
- Cost overruns & wastage

## ✅ Solution

- AI Forecasting with weather & logistics
- Dynamic real-time scheduling
- Live dashboards for managers
- Reduced wastage & downtime
- Seamless collaboration



# Microsoft Copilot AI Agent for AEC Industry



Who's available?



Which machine is free



Avoid double bookings

## Labour & Equipment AI Agent

It is your intelligent co-pilot for construction project success. It continuously monitors labour performance, equipment utilization, and material dependencies across multiple sites — spotting critical task delays, breaking down cost overruns, and flagging underutilized machinery before it affects productivity. By turning complex data into clear, real-time insights, it empowers project managers to make faster, smarter decisions that reduce risks, optimize resources, and ensure projects are delivered on time and within budget. The result: a proactive, data-driven approach to construction management that drives measurable efficiency and profitability.

# Microsoft Copilot AI Agent for AEC Industry



## Labour & Equipment AI Agent Smarter Workforce & Machinery Utilization with AI

### ❖ Problem

- Underutilized workforce & machines
- Frequent downtime & idle hours
- Poor tracking of productivity
- Cost overruns due to inefficiencies

### ✅ Solution

- AI-based demand & capacity forecasting
- Real-time allocation of labour & equipment
- Downtime & idle time alerts
- Productivity & cost optimization
- Smarter scheduling & resource balancing

# Microsoft Copilot AI Agent for AEC Industry

## From Site to Proposal – Instantly with AI

- Pinpoint exact plot location in real time
- Analyse rural infrastructure & surroundings
- Auto-generate proposal-ready insights
- Reduce site visit & evaluation time
- Boost decision-making with AI-driven accuracy

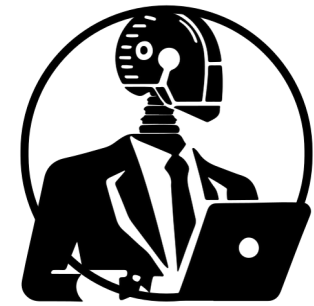
## Site Evaluation & Feasibility AI Agent

### Site Evaluation & Feasibility AI Agent

It is a smart decision-support assistant for real estate developers and investors. It analyzes land feasibility, legal and environmental risks, market demand, price trends, construction costs, and potential delays — giving you a clear, data-backed picture of every opportunity. By simulating design and amenity impacts and predicting financial viability and ROI, it empowers teams to reduce risks, optimize investments, and select the most profitable sites. The result: faster, more confident decision-making and higher project success rates. With its forward-looking forecasts, it helps you stay ahead of market shifts and secure a competitive edge.

# Site Evaluation & Feasibility AI Agent

## AI-Driven Insights for Smarter Site Selection & Project Planning

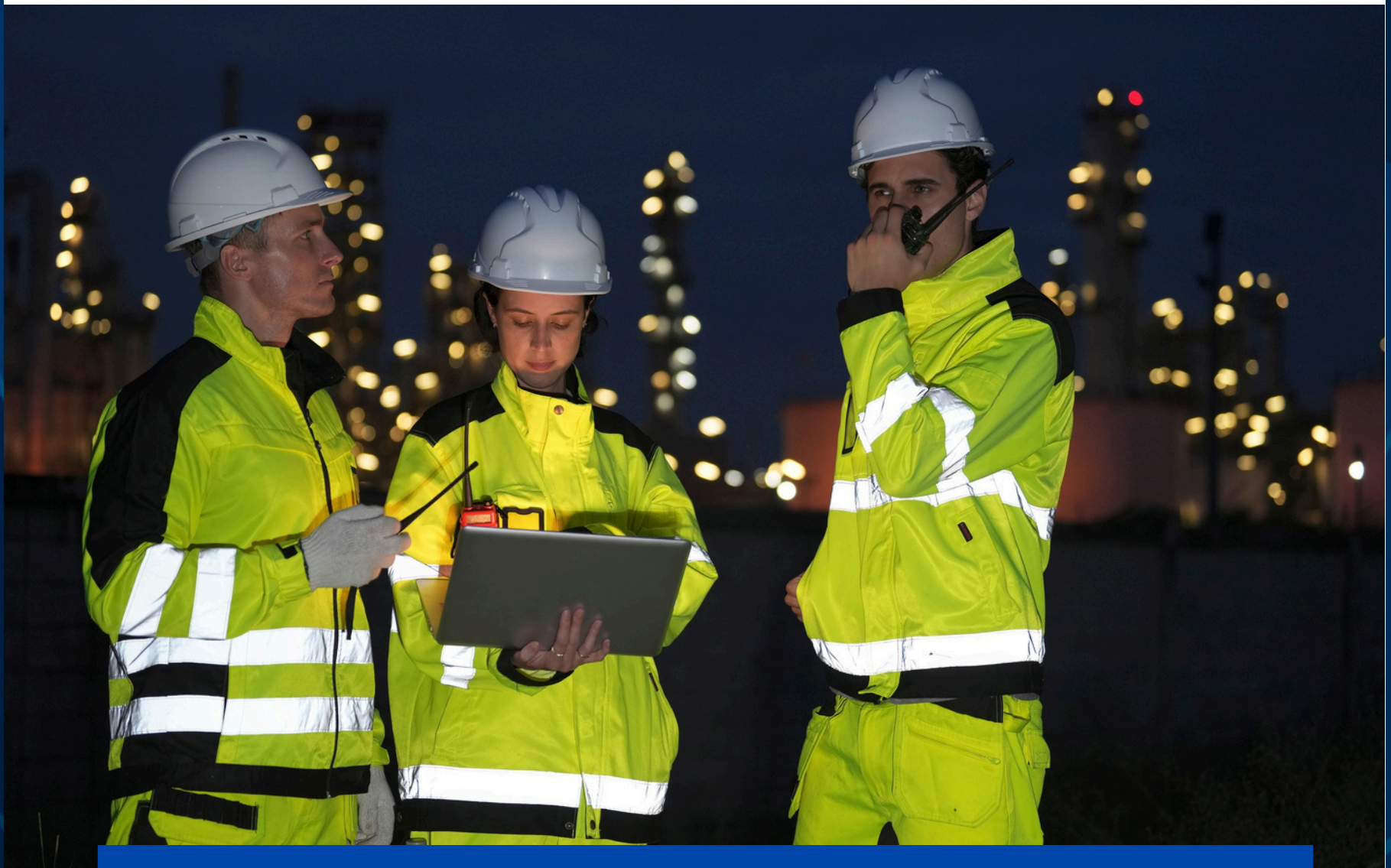


### ❌ Problem

- Manual evaluation is slow & error-prone
- Inaccurate feasibility assessments
- Overlooked environmental & regulatory risks
- Costly rework from poor site decisions

### ✅ Solution

- AI-powered site scoring & risk analysis
- Integration of soil, terrain & weather data
- Real-time feasibility checks & compliance insights
- Cost-benefit & ROI forecasting
- Smarter go/no-go decisions



# Microsoft Copilot AI Agent for AEC Industry



## Facility Management AI Agent

It is your always-on partner for smarter, safer, and more efficient building operations. It streamlines routine maintenance tasks, monitors building condition and risk areas, tracks mechanical and electrical systems, and ensures safety and compliance. By proactively identifying issues before they escalate and optimizing service and vendor management, it reduces downtime, improves asset utilization, and cuts operational costs. Its long-term planning insights help create a safer, more sustainable workplace while keeping facilities running at peak efficiency.

# Microsoft Copilot AI Agent for AEC Industry



## Facility Management AI Agent

### Proactive, AI-Powered Facility

#### Operations

##### ● Problem

- Reactive maintenance= high costs
- No clear visibility of asset conditions
- Energy waste & compliance risks
- Vendor & service coordination gaps

##### ✔ Solution

- Predictive maintenance with AI insights
- Real-time asset health monitoring Smart
- scheduling for vendors & tasks
- Energy optimization & sustainability tracking
- Compliance & safety alerts

# Why AI Agents for Construction & Facility Management?

Smarter, Faster, Cost-Effective Operations



## End-to-End Efficiency

Automates scheduling, planning & monitoring



## Real-Time Visibility

Dashboards & insights for informed decisions



## Agility & Flexibility

Adjust instantly to on-site changes & risks



## Collaboration Made Easy

Seamless sync across teams & vendors



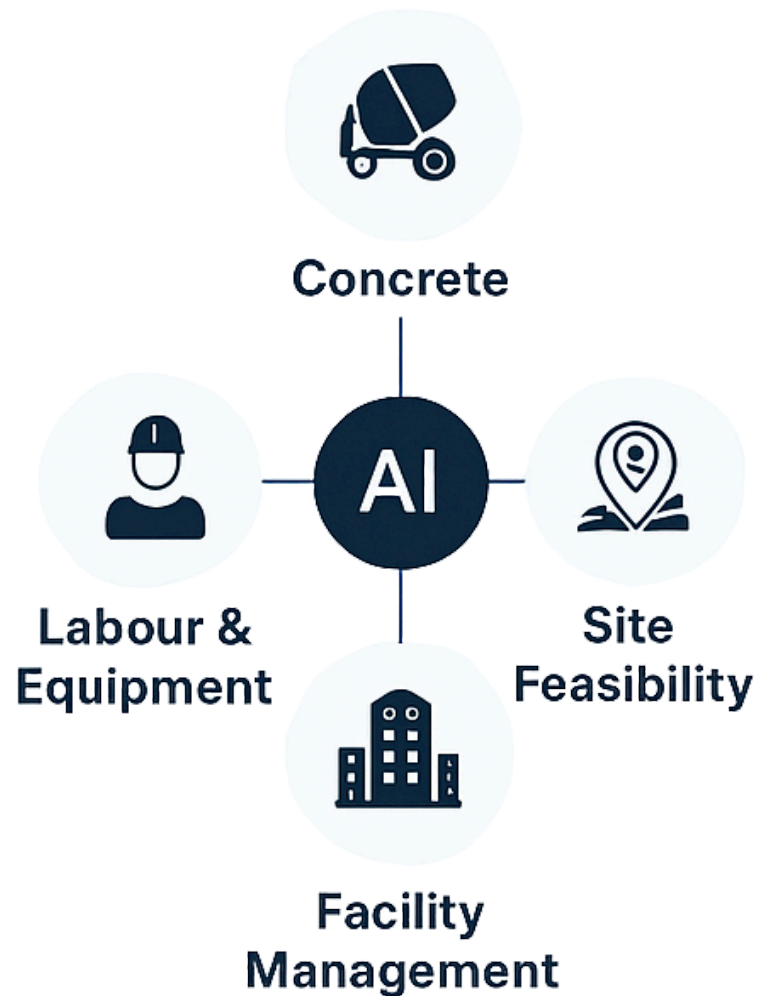
## Sustainability & Compliance

Smarter energy use & risk management



## Cost Savings

Reduce wastage, downtime & rework



**One AI Ecosystem.  
Many Agents. Maximum Impact.**



**Evolved Identity. Enterprise Proven.  
Trusted as Your AI Saarthi.**

 Email: [raj.ganatra@compusoftadvisors.com](mailto:raj.ganatra@compusoftadvisors.com)

 Phone: +61 409 64 3494

 Website: [www.compusoftadvisors.com.au](http://www.compusoftadvisors.com.au)